

Tulalip Tribes Natural Resources Department Report

SNOQUALMIE RIVER JUVENILE SALMON OUT-MIGRATION STUDY PROGRESS REPORT

February – June 2023

Data Analysis and Report Writing by Heidi Stewart
Screw Trap Operations Managed by Jonah Keith



Tulalip Natural Resources Department
6406 Marine Dr.
Tulalip, WA 98271



TABLE OF CONTENTS

Acknowledgements.....	1
Introduction.....	1
Snoqualmie River Trapping Site.....	2
Summary of Sampling Operations.....	3
Catch Per Unit of Effort (CPUE).....	4
Production Estimates	8
Natural-Origin Sub-Yearling Chinook Salmon	10
Natural-Origin Yearling Coho Salmon	12
Natural-Origin Yearling Chinook Salmon	Error! Bookmark not defined.
Efficiency Testing and Results	15
Genetic Monitoring.....	17
Discussion.....	17
References.....	19
Appendix A: Summary of 2023 Trap Catch and Mortalities.....	18

ACKNOWLEDGEMENTS

The 2023 Snoqualmie River Juvenile Salmon Out-Migrant Study was made possible by funding from the Snoqualmie Watershed Forum, the Tulalip Tribes and the National Oceanic and Atmospheric Administration Fisheries (NOAA Fisheries) Pacific Coastal Salmon Recovery Fund. We are very grateful to the private landowners who allow us to conduct this important research on their land, including Jeremy and Ali Turner from the Flooded River ranch and Ray Keasey. We are grateful for analysis and coding support in the transition to our new production estimate model provided by Jonah Keith, Jonathan Grindall, Peter Lisi, Carl Schwarz, Joseph Anderson, Diego Holmgren, Kurt Nelson, Michelle Totman, Marianna Alexandersdottir and Todd Zackey. We would like to thank all of the staff at the Wallace Fish Hatchery for providing the fish that we use in our efficiency testing. This research is made possible by data which was collected over many cold days and nights by our hard-working field staff, including: Michael Abrahamse, Kolten Ollom, Ethan Seay, Michael Arbuckle, Evahn LaPointe, Michael Townsend, Brent Trim, Oleh Litvinsev, Jonathan Grindall, Tim Voss, Todd Gray, Jonah Keith, and Todd Zackey.

INTRODUCTION

Due to considerable declines in salmon populations, fisheries managers and stakeholders have been working collaboratively to restore salmon runs in the Snohomish watershed. In 1994, a partnership of 41 organizations formed the Snohomish Basin Salmon Recovery Forum (the Forum) in order to implement a watershed scale, scientifically-based, adaptive management strategy to better inform salmon recovery. The Snoqualmie sub-basin is managed by a partnership of local tribes and municipalities called the Snoqualmie Watershed Forum.

In 2005, the Forum adopted the *Snohomish River Basin Salmon Conservation Plan* in order to coordinate fisheries management on a watershed scale. To inform this planning with the best available science, it is necessary to gather and analyze data on Chinook and Coho Salmon abundance, productivity, survival, escapement, spatial structure, and life-history diversity within the Snohomish system (Snohomish Basin Salmonid Recovery Technical Committee, 2005). Information about the trends and inter-annual variability in these populations are critical to inform salmon recovery efforts, provide basic information on the productivity and capacity of the system, and lead to significant improvements in harvest management modeling and run forecasting. Additionally, the monitoring of production and survival along with other physical, chemical, and biological conditions provides a means to evaluate habitat restoration effectiveness, recovery actions, habitat conditions, and potential ecological trajectories in the basin.

In 1999, the National Marine Fisheries Service (NMFS) listed the Puget Sound Chinook Salmon *Oncorhynchus tshawytscha* as threatened under the federal Endangered Species Act (ESA). This listing included Chinook Salmon from the Snohomish River basin, which includes sub-populations from the Skykomish and Snoqualmie Rivers. Decreases in many runs of Puget Sound Coho Salmon *Oncorhynchus kisutch* have also resulted in their designation as a species of concern under the ESA. This report focuses on Chinook and Coho Salmon because recovery efforts targeted at these species will help other federally listed salmonid stocks in the watershed.

A key method for monitoring Snohomish River salmon populations has been the operation of rotary screw traps in the Skykomish and Snoqualmie rivers. Over the last 22 years, these projects have sampled juvenile Chinook and Coho Salmon as they emigrate to the Puget Sound. The goals of these trapping efforts are to estimate Chinook and Coho Salmon natural production, migration patterns, and freshwater survival. These goals are accomplished through the direct quantification of juvenile salmon emigrations, evaluation of trap

efficiency, and assessment of influential environmental attributes. The Tulalip Tribes' trapping project has been classified as a project of high priority by the Forum because it is necessary for stock assessment, population monitoring and run forecasting (Snohomish Basin Salmonid Recovery Technical Committee, 2005).

SNOQUALMIE RIVER TRAPPING SITE

The current trap site is located on the Snoqualmie River 32 miles upriver from the ocean and 12 miles up from the confluence with the Skykomish River (Figure 1). It is on the Flooded Riveranch in Duvall, WA in a section of the channel that flows north (Figure 2). The river at this point has a wetted width of ~142 ft., a bankfull width of ~210 ft., a maximum bankfull depth of ~23.5 ft., and a summer low-flow depth of ~5 ft. The water surface velocity is ~3-4 ft./sec., the summer low flow discharge is ~847 cubic feet per second (CFS), and the mean annual discharge is ~3,800 CFS. The channel gradient is <1% and the substrate is principally sand and silt with some gravel and cobble on the western side of the channel. The land use adjacent to the trap is principally agriculture with riparian vegetation limited to the banks (e.g. <30 ft.). The riparian zone principally consists of grass, shrubs, and a few scattered trees. At the immediate trap site, the left bank is composed of a steep slope vegetated with mixed deciduous trees and an understory of blackberry and salmonberry (leading to West Snoqualmie Valley Rd NE). The right bank is steeply cut and leads to an active horse and cattle pasture. Riparian vegetation on the right bank is principally Japanese Knotweed, Himalayan Blackberry with an occasional Red Alder and Cottonwood. In 2003, a previous landowner had a fence built around the pasture on the right bank creating a buffer zone of ~50 ft. between the pasture and the river bank. This buffer was planted with an assortment of native riparian vegetation (Kubo et al. 2013).

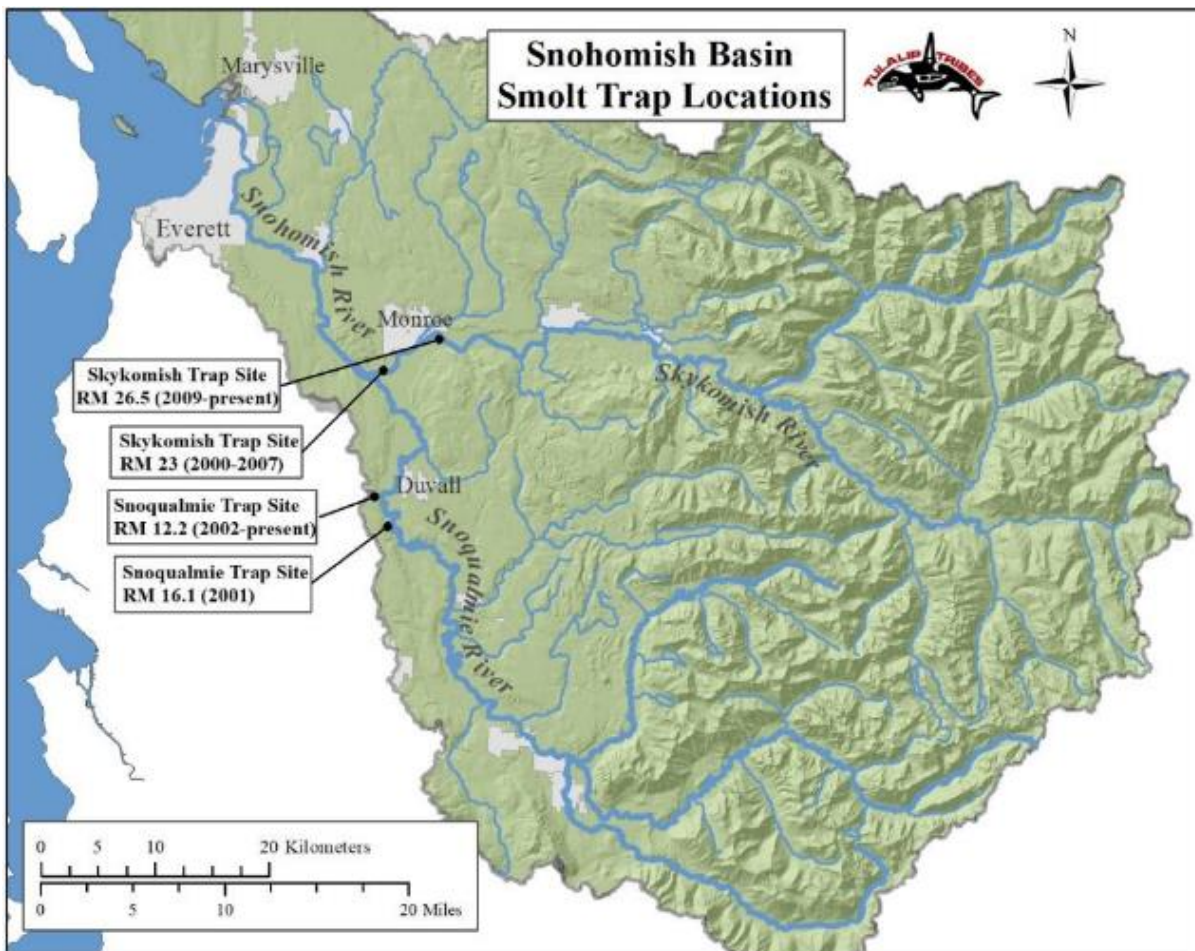


Figure 1: Map of the Snohomish watershed with the locations of the trap sites on the Skykomish and Snoqualmie Rivers.



Figure 2. Aerial photograph of the trap site at river mile 12.2 on the Snoqualmie River in Duvall, WA. The yellow X indicates the approximate trap fishing position.

SUMMARY OF SAMPLING OPERATIONS

The Snoqualmie River rotary screw trap is operated during the juvenile salmon outmigration from February through June. Sampling occurs on four to five weeknights and one or two weekdays per week. Sampling dates are stratified by Julian week (JW) in order to compare results annually. Table 1 shows the Julian weeks that were sampled in 2023 and the corresponding dates. Generally, sampling occurs from JW 7 to JW 25 with some variability in timing. In 2023, sampling occurred from February 21st to June 21st (JW 8 -JW 25). In JW 20, the trap was removed and not fished due to high flows and significant debris. The trap fished for approximately 948 hours, with 564 of those hours fished at night, representing 59% of the total trapping effort.

A detailed summary of catch numbers by month can be found in Appendix A. During the sampling season 4,776 salmonids were captured. Captured unmarked Chinook Salmon included 613 sub-yearlings (0+) and one yearling (1+). The number of unmarked sub-yearling Chinook Salmon caught at the Snoqualmie River trap in 2023 just above the project average of 563 (Table 2). Captured unmarked Coho Salmon included 313 yearlings and 1,067 sub-yearlings. The number of unmarked 1+ Coho Salmon caught was well below the project average of 1,037. During the trapping and handling process a total of 10 salmonid mortalities were reported. Mortality as a percentage of the total salmonid catch was approximately 0.21% (Appendix A).

Table 1. Julian weeks and corresponding dates for the 2023 sampling season

Julian Week	From	To
8	2/19/2023	2/25/2023
9	2/26/2023	3/4/2023
10	3/5/2023	3/11/2023
11	3/12/2023	3/18/2023
12	3/19/2023	3/25/2023
13	3/26/2023	4/1/2023
14	4/2/2023	4/8/2023
15	4/9/2023	4/15/2023
16	4/16/2023	4/22/2023
17	4/23/2023	4/29/2023
18	4/30/2023	5/6/2023
19	5/7/2023	5/13/2023
20	5/14/2023	5/20/2023
21	5/21/2023	5/27/2023
22	5/28/2023	6/3/2023
23	6/4/2023	6/10/2023
24	6/11/2023	6/17/2023
25	6/18/2023	6/24/2023

CATCH PER UNIT OF EFFORT (CPUE)

Catch data are converted to catch per unit effort (CPUE) for quick analyses dealing with run-timing and migration size. This allows for easier comparison of catch both within and between years. CPUE represents the number of fish caught per hour and can be averaged for a period by dividing the catch by the number of hours fished for that period. CPUE for unmarked Chinook Salmon sub-yearlings showed two distinct peaks in 2023 at JW 15 and JW 17 (Figure 3). The timing of the sub-yearling Chinook Salmon out-migration does not exhibit the observed consistency documented for yearling Coho Salmon. The yearling Coho Salmon out-migration showed two peaks during JW 17 and JW 19, when approximately 1-2 fish per hour were encountered. This peak is temporally consistent with all other years of the trapping project, which generally occurs during JWs 17-21 (Kubo et al. 2013).

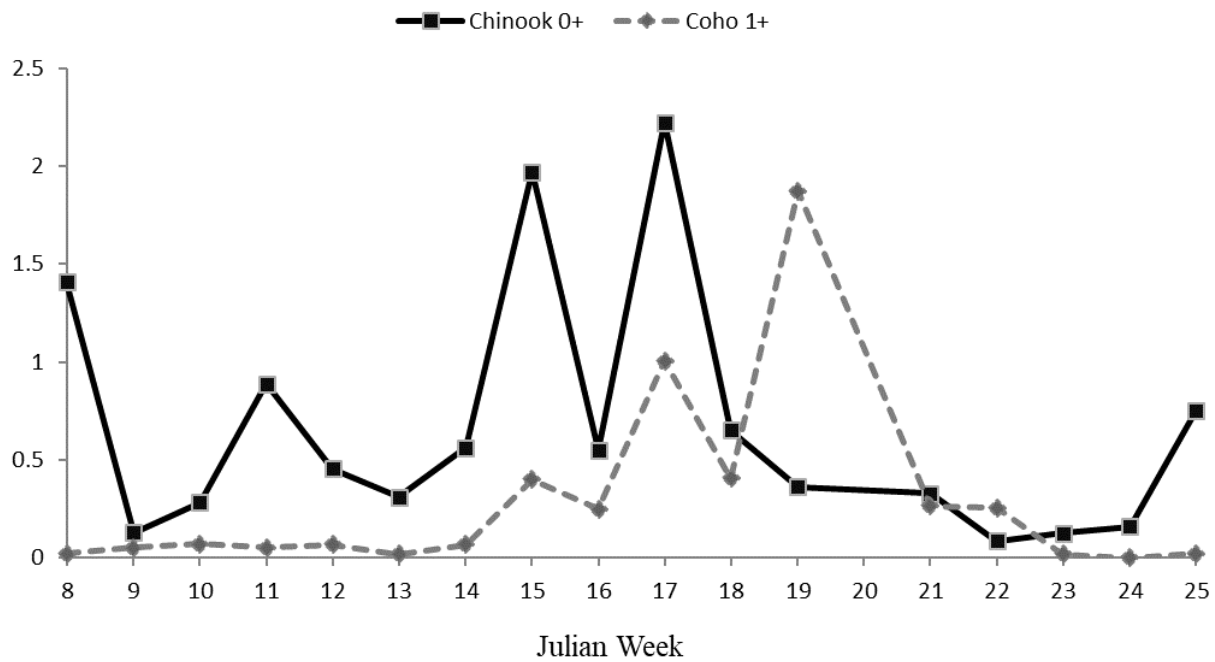


Figure 3. Sub-yearling (0+) Chinook Salmon and yearling (1+) Coho Salmon CPUE by Julian week at the Snoqualmie River trap, 2023.

Average annual salmonid CPUE on the Snoqualmie trap has exhibited variability throughout the duration of the project primarily due to fluctuating sampling conditions and the strength of a given year’s out-migrant cohort. The average CPUE for yearling Coho Salmon in 2023 were far below the overall average (2001-2022; Table 2), while for sub-yearling Chinook Salmon was slightly above (Table 2).

Table 2. Annual sampling effort, catch totals, and catch CPUE (fish per hour) for sub-yearling Chinook and yearling Coho Salmon at the Snoqualmie River rotary screw trap 2001-2023.

Year	Effort (Hours)	0+ Chinook	1+ Coho	Chinook CPUE	Coho CPUE
2001	509	619	553	1.22	1.09
2002	712	584	1751	0.82	2.46
2003	946	887	1305	0.94	1.38
2004	1056	610	1127	0.58	1.07
2005	1006	672	1187	0.67	1.18
2006	1011	794	2031	0.79	2.01
2007	510	153	615	0.30	1.21
2008	318	275	587	0.87	1.85
2009	633	269	765	0.43	1.21
2010	1123	668	1149	0.60	1.02
2011	573	282	1662	0.49	2.90
2012	847	377	1384	0.44	1.63
2013	1218	623	1718	0.51	1.41
2014	805	293	1097	0.36	1.36
2015	1017	89	678	0.09	0.67
2016	1112	50	809	0.04	0.73
2017	1131	1517	925	1.34	0.82
2018	1117	1587	1517	1.42	1.36
2019	818	667	612	0.82	0.75
2020 ^a	159	13	1	0.08	0.01
2021	764	582	563	0.76	0.74
2022	913	179	473	0.20	0.52
2023	949	619	313	0.65	0.33
Average (2020 not included)	868	563	1037	0.65	1.26

^a = Trapping cancelled due to Covid-19

It appears that Chinook Salmon CPUE was on a downward trend from 2001-2016 when it reached the project lows in 2015 and 2016 at approximately 0.09 and 0.04 fish per hour, respectively (Figure 4, Table 2). In 2017 and 2018, there was a spike in CPUE followed by near project lows in 2022 with a CPUE of 0.2 fish per hour. This was thought to be due to lower egg-to-migrant survival rates caused by flooding during the egg incubation period (Zimmerman et al. 2015; Montgomery et al. 1996). Fortunately, in 2023 sub-yearling Chinook numbers rebounded to just slightly below years 2019 and 2021 and much higher than in 2022.

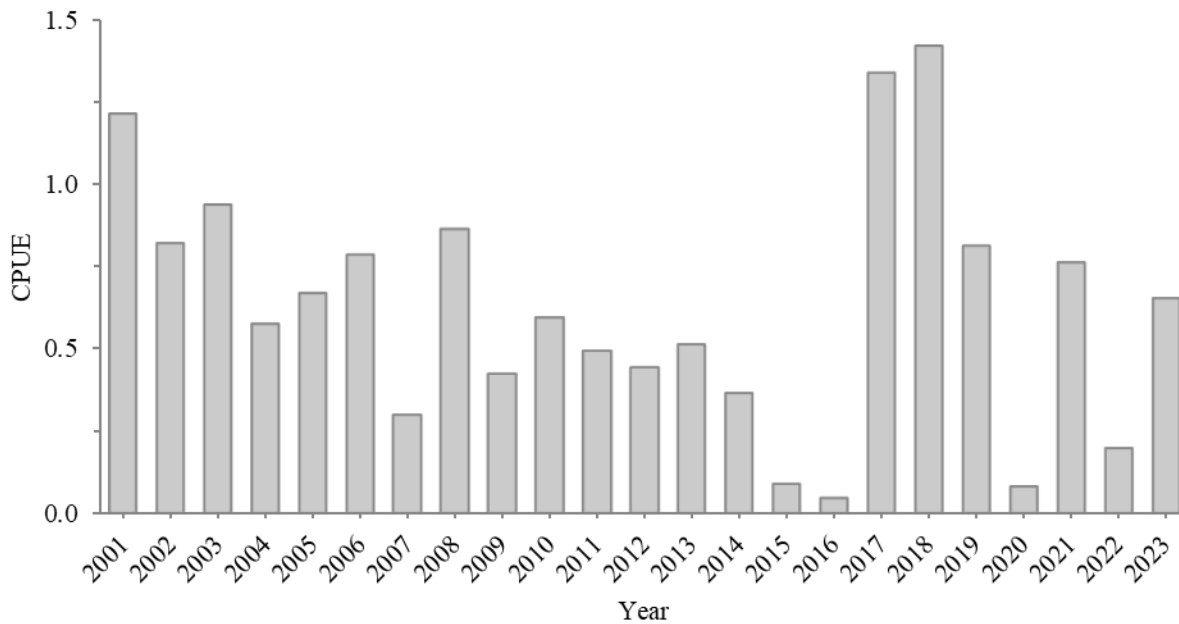


Figure 4. Natural-origin sub-yearling Chinook Salmon CPUE time series at the Snoqualmie trap by year; 2001-2022. Sampling was ended early in 2020 due to Covid-19.

Yearling Coho Salmon catch rates show some variability depending on river conditions and the size of a given year’s out-migrant cohort but concerningly, the total annual catch and CPUE averages across all years show a slight decreasing trend at the Snoqualmie trap (Figure 5). Unfortunately, over the past two years we have seen a decline in yearling Coho Salmon CPUE with project lows for both the 2022 and 2023 seasons. In 2023, the average yearling Coho Salmon CPUE (0.33) was much lower than the 2001-2022 average of 1.26. The total number of yearling Coho Salmon encountered was far below project averages to date at 313 individuals encountered (2001-2023 average: 1,037). Coho Salmon CPUE in 2023 was the lowest since we’ve been collecting data.

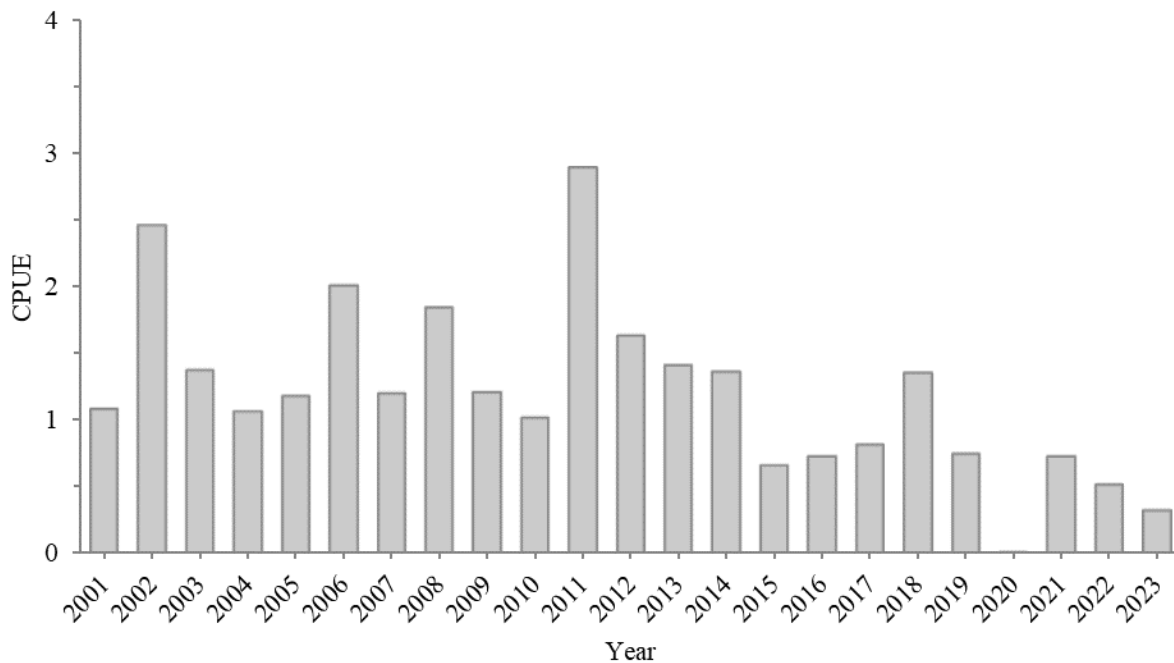


Figure 5. Natural-origin yearling Coho Salmon CPUE time series at the Snoqualmie trap by year; 2001-2022. Sampling was ended early in 2020 due to Covid-19.

PRODUCTION ESTIMATES

Production in this report refers to the abundance of out-migrating salmon at the trap site. Our traps catch around one to three percent of the emigrating salmon and this proportion is known as trap efficiency. In order to estimate the total number of fish passing the trap, we use the efficiency to expand the catch. Trap efficiency is estimated using mark-recapture efficiency trials where marked fish are released upstream of the trap weekly and the number that are recaptured are tallied (see details in the efficiency section of this report).

Last year, we transitioned to a new production estimate model in order to update our statistical methods. Jonah Keith cleaned the database and coded our data processing in order to recalculate all previous estimates. We now use a Bayesian time-stratified Petersen estimator that relies on a hierarchical, semi-parametric model with penalized spline (P-spline) smoothing to estimate production during sampled and un-sampled strata. Posterior distributions are modelled in Just Another Gibbs Sampler (JAGS) software using Markov chain Monte Carlo (MCMC) simulations. Studies have shown Bayesian inference models to be the best fit when trap efficiencies are too variable to pool, when there are strata with minimal efficiency data and when there are trap outages (Schwarz et al. 2009, Bonner and Schwarz 2011, Oldemeyer et al. 2018). This model also provides statistically robust imputations of production and efficiency during un-sampled periods.

Our trap efficiency values tend to exhibit too much heterogeneity to apply a pooled Petersen estimator. Pooling efficiencies would introduce bias given the variability in efficiency test values. Time-stratified Petersen estimators assume homogeneity within each stratum, so efficiency testing must be conducted consistently to avoid bias. Simple Petersen estimators can be a decent option when efficiency testing is done regularly throughout the season, but due to constraints around river size and hatchery releases, this would be highly challenging on the Snoqualmie River. Simple Petersen estimates do not account for variance in efficiency testing, so it is likely that these models are underestimating uncertainty. Comparisons of mark-recapture estimators have shown that Bayesian inference models provide a higher level of precision compared

to pooled or stratified Petersen estimates and also give more accurate estimates of uncertainty (Bonner and Schwarz 2011, Oldemeyer et al. 2018).

Production estimates are modeled using the Bayesian Time-Stratified Population Analysis System (BT-SPAS) R package, version 2021.11.02 (available at www.github.com/cschwarz-stat-sfu-ca/BTSPAS). We use the diagonal model with three chains, iterations are set at 200,000, burn in period is 100,000 and 6,000 iterations are saved, which makes the thin rate 50. Bayesian inference allows us to use credible intervals, so we report a 95% credible interval, which means that actual production has a 95% probability of being within the interval. This provides an easily understandable measure of uncertainty. For our point estimates, we use the median values of the posterior distribution since the distributions are log-normal with asymmetric tails. Our 95% credible interval is bounded by the 2.5th and 97.5th percentiles. Model convergence and mixing is checked using trace plots and by checking the autocorrelation. Brooks-Rubin-Gelman statistic values are calculated and kept under 1.1. If the model doesn't converge sufficiently, we increase the iterations and burn-in period. Goodness of fit is checked using deviance information criterion as well as Freeman-Tukey and deviance statistic plots. Splines are split using the "jump after" function whenever catch numbers jump up or down rapidly and if it improves the fit.

Each Julian week is stratified into day and night periods, defined by sunrise and sunset times in Duvall, WA. This diurnal stratification is used because catch rates suggest differences in migration behavior and/or trap efficiency between day and night periods. Since we don't sample continuously, we must expand the trap catch to estimate the total number of fish that would have been caught for each Julian week and diel stratum. Daytime catch is expanded into unsampled daytime strata and nighttime catch is expanded into unsampled nighttime strata. This expansion is done by dividing the catch by the proportion of the week sampled with the following formula:

$$\hat{C}_{ix} = n_{ix} / f_{ix} \quad (1)$$

where

\hat{C}_{ix} = estimated catch for diel stratum x during week i

n_{ix} = catch for diel stratum x during week i

f_{ix} = proportion of diel stratum fished during week i .

This expansion assumes that catch rates are similar during sampled and unsampled periods. In order to avoid violating this assumption, we reject some sampling events that are less than four hours if they occur during a time that could bias catch rates. For example, if a sampling event was only three hours long and occurred immediately before sunset, we would reject it because the catch rate is likely higher around sunset than the rest of the day. Occasionally, we don't reject these short effort events when recent surveys balance out the times sampled. Also, weeks with low effort are rejected since it is less likely that catch rates remained the same throughout the entire week. It is important to separate day and night strata before making this expansion, but once the expansion is done, catch during the two diel strata are summed so that a total catch for each week can be input into the production model. With our previous model, we were able to calculate the variance in this expansion, but we currently aren't able to incorporate it into our credible interval estimate. We think that with our dataset, it is more important to account for the variance in efficiency testing than the variance in this expansion since the efficiency testing is a much larger source of variance.

The coefficient of variation (CV) is calculated by dividing the posterior standard deviation by the mean. Since the posterior standard deviation is drawn from a probability density, CV in BT-SPAS is a direct measure of uncertainty in the parameter value, rather the more commonly used classical inference CV, which is a

measure of the variance in estimate values if the experiment was repeated many times. This Bayesian version of CV provides a more intuitive metric for interpreting uncertainty.

Natural-Origin Sub-Yearling Chinook Salmon

Based on our data as well as those of other Puget Sound trapping efforts, we assume that the beginning and end of the sub-yearling Chinook Salmon emigration are Julian weeks 1 and 30, respectively (Conrad and MacKay 2000; Seiler et al. 2002; Lisi 2019; Topping and Anderson 2021b). Although we don't sample during the very beginning and end of the migration, the BTSPAS package is able to impute production during these times with known certainty. In order to improve MCMC convergence and force our estimates to zero at the ends of the season, we enter catch values of one or zero for Julian weeks one and 30 as well as for some of the adjacent un-sampled weeks (Carl Schwarz, personal communication).

Table 3. Natural-origin sub-yearling Chinook Salmon production estimates in the Snoqualmie River, 2001-2023.

Migration Year	Production Estimate	2.5% Credible Interval	97.5% Credible Interval	Coefficient of Variation (CV)
2001	177,711 ^a			
2002	127,298 ^a			
2003	143,296 ^a			
2004	90,991	39,058	209,056	0.47
2005	92,382	55,223	161,648	0.30
2006	131,345	73,788	224,840	0.29
2007	39,157	26,679	59,463	0.21
2008	^b			
2009	45,090	24,717	99,747	0.43
2010	136,961	79,396	263,764	0.34
2011	75,453	44,265	134,453	0.29
2012	45,093	32,935	61,285	0.16
2013	185,552	129,271	263,720	0.18
2014	113,636	81,435	160,672	0.18
2015	18,322	14,798	23,081	0.12
2016	14,043	7,670	28,821	0.35
2017	515,311	400,949	684,023	0.14
2018	348,002	268,881	482,088	0.15
2019	156,010	113,813	233,437	0.23
2020	^c			
2021	79,111	45,978	187,488	0.43
2022	75,049	41,333	161,474	0.40
2023	101,268	61,217	178,240	0.30
Average	129,099	87,070	202,298	0.28
a = No efficiencies, used simple Petersen estimate with five-year mean of efficiencies				
b = Trap repairs				
c = Covid-19 shut down				

In 2023, we estimate that approximately 101,268 natural-origin sub-yearling Chinook Salmon emigrated past our trap site on the Snoqualmie River. This production estimate is below the project average of 129,099 but

an increase since 2021 (Table 3). Previous to 2017, production estimates were on a gradual long-term decline, reaching the project low in 2016 (Figure 6). After a spike in 2017, the largest estimated emigration on record, sub-yearling Chinook appeared to be a downward trend. This last trapping season has shown a slight increase in production from the past two seasons but we are still seeing low production estimates compared to previous years.

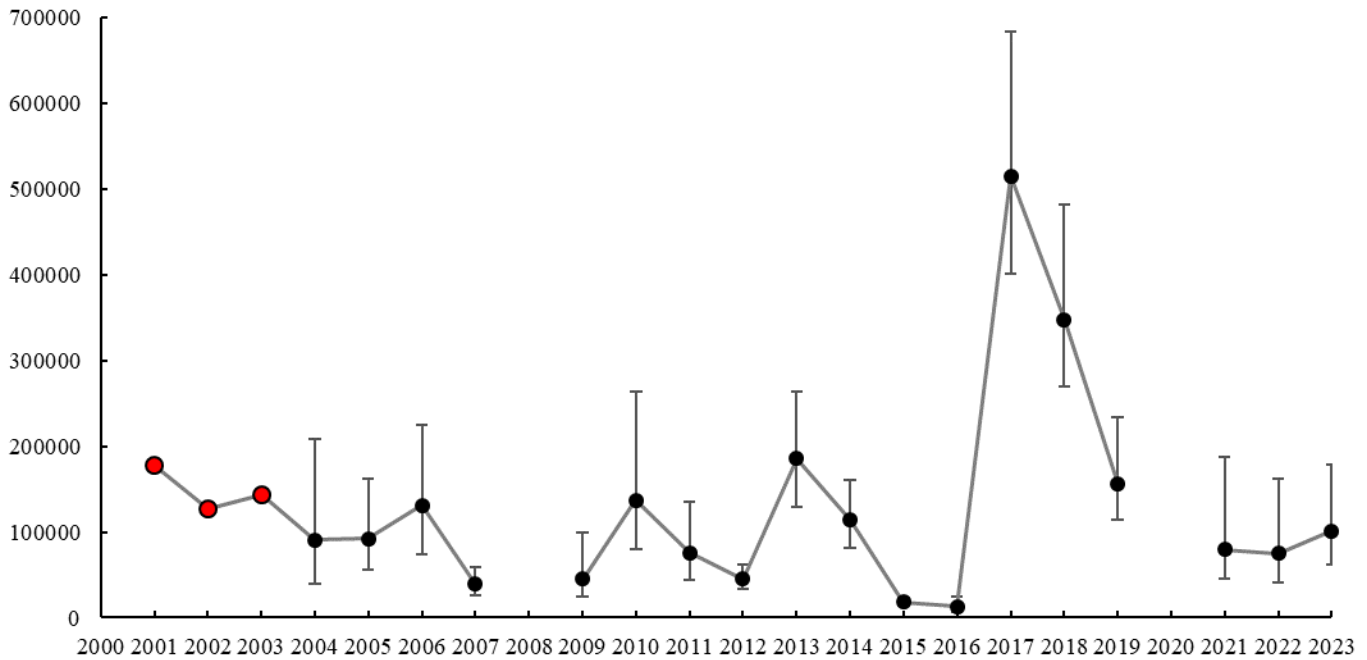


Figure 6. Natural-origin sub-yearling Chinook Salmon production estimates for the Snoqualmie River, 2001-2023. Red dots indicate years that used simple Petersen estimates with five-year means of efficiencies due to a lack of efficiency testing. Error bars represent the 95% credible interval range.

During the 2023 trapping season, most of the outmigration seems to have occurred between JWs 15 and 17 (Figure 7). The credible intervals are wide on these peak production weeks due to having only five acceptable efficiency tests throughout the whole season. While efficiency tests were conducted each week during trap operations, the peak outmigration weeks had especially poor efficiency which increases the credible intervals of production.

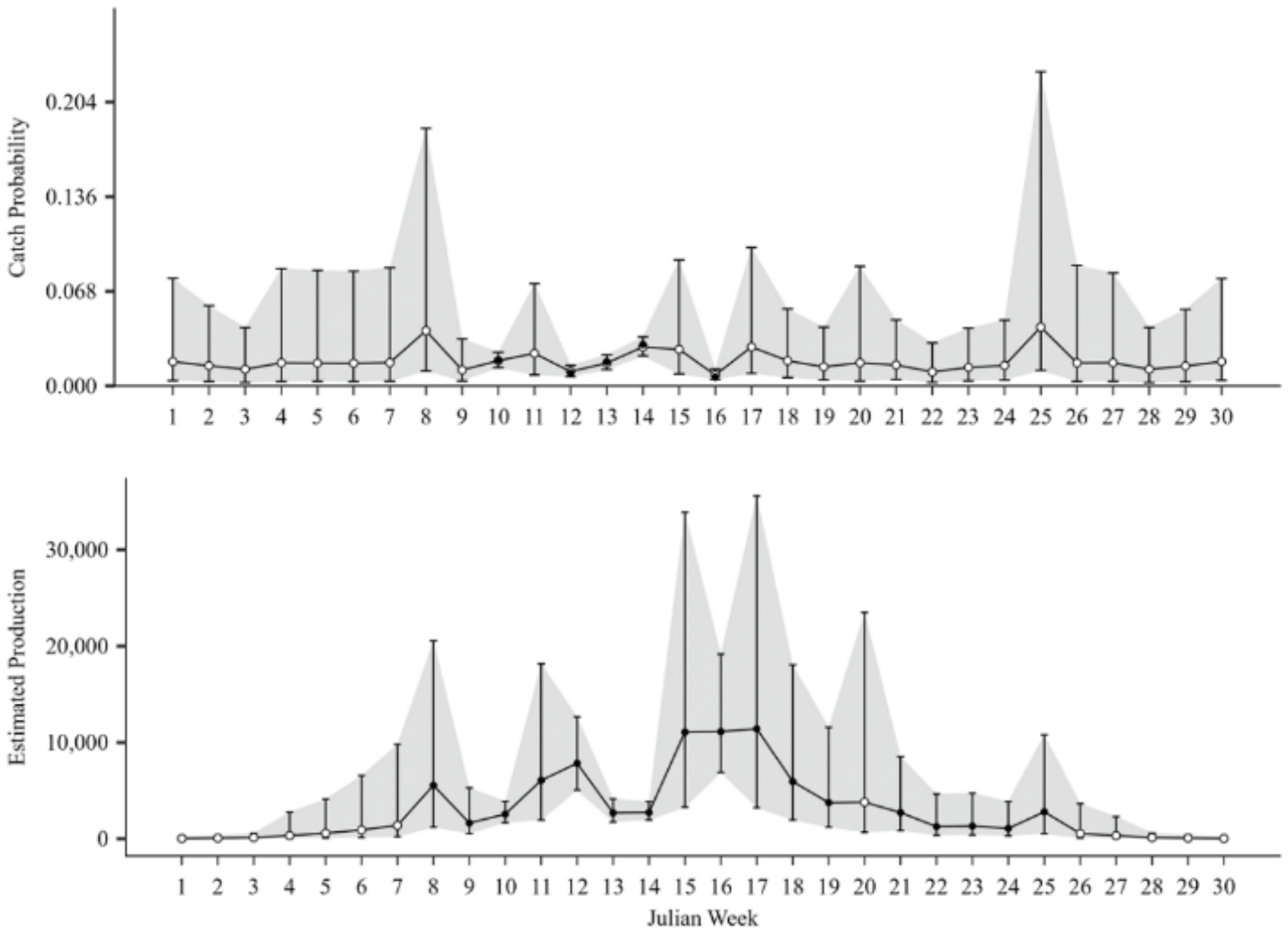


Figure 7. Natural-origin sub-yearling Chinook Salmon efficiency (i.e. catch probability, top panel) and production estimates (bottom panel) by Julian week in the Snoqualmie River, 2023. Shaded areas represent the credible intervals. In the catch probability plot, closed circles represent actual efficiency tests values, while open circle values were modeled. In the production estimate plot, open circles represent unsampled weeks and closed circles represent sampled weeks.

Natural-Origin Yearling Coho Salmon

For yearling Coho Salmon, we assume that the emigration begins during JW 7 and ends during JW 26, which is consistent with nearby river systems (Conrad and MacKay 2000; Seiler et al. 2002; Lisi 2019). We consider Coho Salmon migration in JWs 6 and 27 to be zero. We estimate that approximately 242,667 natural-origin yearling Coho Salmon emigrated past our trap site on the Snoqualmie River in 2023. This production estimate is well below the project average of 375,600 and a large decline from the 2022 season (Table 4, Figure 8). The credible intervals for Coho production are wide on some years, however it is possible to see population trends across the 20+ year time series. From 2002 to 2007, production trended downward, followed by an increase until 2011, when it dropped back down until 2015 and has remained at low levels since then (Figure 8).

Table 4. Natural-origin yearling Coho Salmon production estimates in the Snoqualmie River, 2001-2023.

Migration Year	Production Estimate	2.5% Credible Interval	97.5% Credible Interval	Coefficient of Variation (CV)
2001	142,125 ^a			
2002	1,110,452	522,317	2,660,610	0.48
2003	404,132	266,255	634,378	0.24
2004	600,252	289,540	1,424,038	0.45
2005	171,946 ^a			
2006	393,938	263,620	611,858	0.22
2007	62,329	46,197	89,366	0.18
2008	361,383 ^a			
2009	274,187	170,606	521,329	0.47
2010	360,277	197,518	691,719	0.34
2011	734,889	494,744	1,135,904	0.22
2012	722,478	443,303	1,273,062	0.29
2013	511,735	385,433	735,163	0.17
2014	363,874	261,890	514,558	0.18
2015	180,367	139,988	239,550	0.14
2016	245,399	163,396	379,315	0.22
2017	238,528 ^a			
2018	162,748	104,579	261,171	0.25
2019	245,866	158,173	416,729	0.26
2020	^b			
2021	236,981	180,414	330,147	0.18
2022	359,582	236,660	601,188	0.25
2023	242,667	95,429	684,991	0.57
Average	375,600	245,559	733,615	0.28
a = Insufficient efficiency tests, used simple Petersen with five-year mean of efficiency tests				
b = Covid-19 shut down				

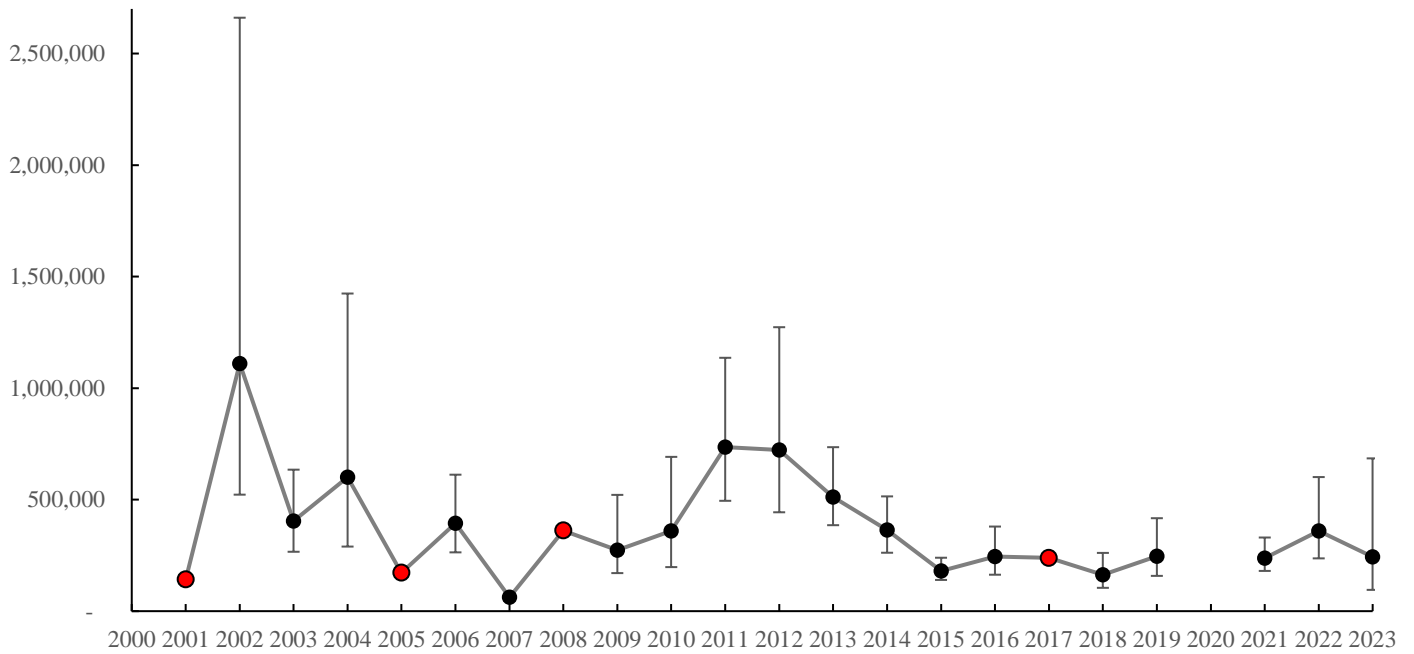


Figure 8. Natural-origin yearling Coho Salmon production estimates for the Snoqualmie River, 2001-2023. Red dots indicate years that used simple Petersen estimates with five-year means of efficiencies due to a lack of efficiency testing. Error bars represent the 95% credible interval range.

The natural-origin Coho Salmon outmigration peaked between JWs 17 and 19 (Figure 9), which is consistent with other years. The 2022 and 2023 credible interval range for yearling Coho Salmon has been wider than recent years with a very high range in 2023 and a large CV value (0.57). This is likely due to uncertainty caused by only having four efficiency tests in 2022 and only two tests in 2023.

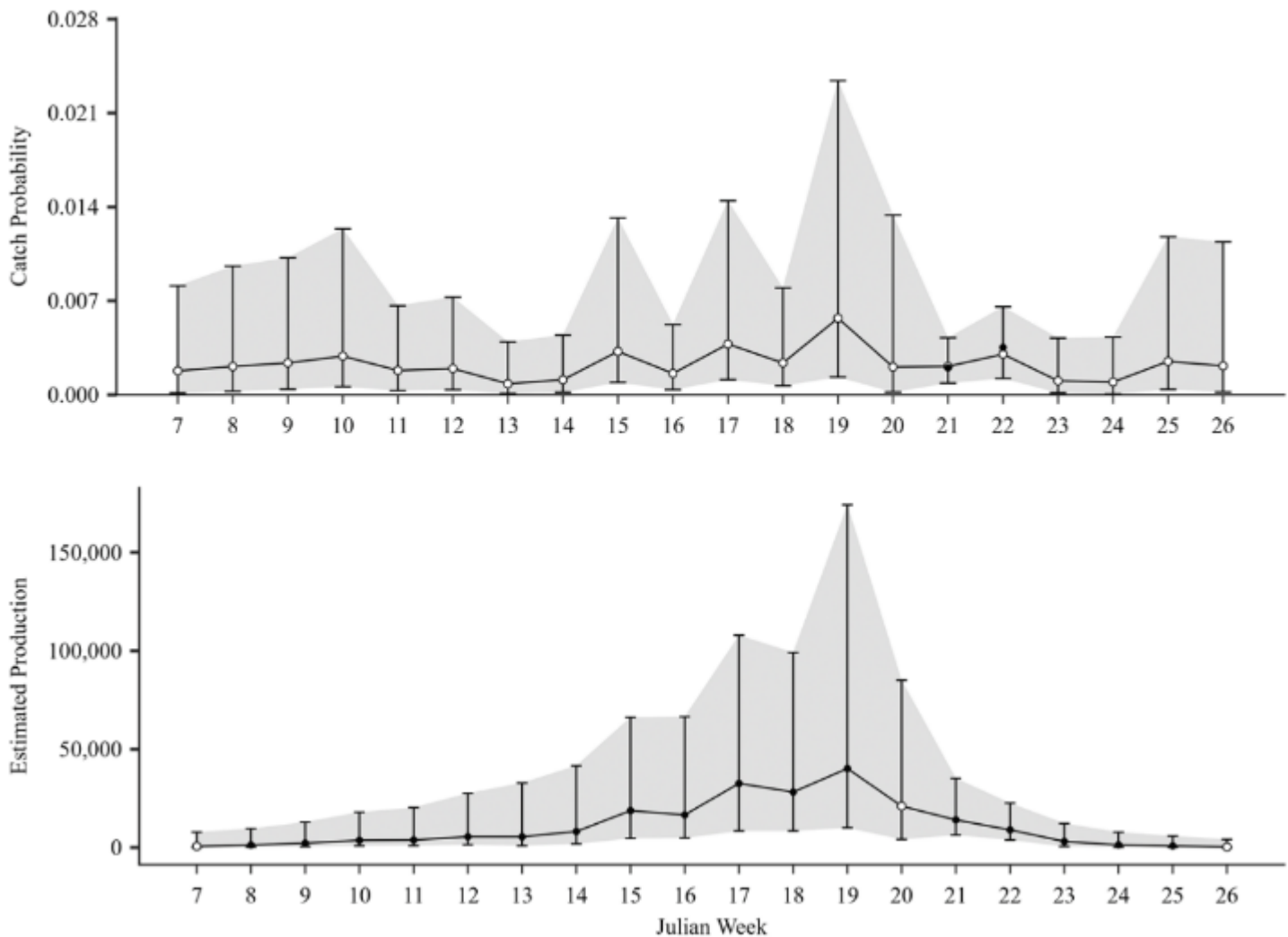


Figure 9. Natural-origin yearling Coho Salmon efficiency (i.e. catch probability, top panel) and production estimates (bottom panel) by Julian week in the Snoqualmie River, 2023. Shaded areas represent the credible intervals. In the catch probability plot, closed circles represent actual efficiency tests values, while open circle values were modeled. In the production estimate plot, open circles represent unsampled weeks and closed circles represent sampled weeks.

EFFICIENCY TESTING AND RESULTS

During the 2023 season, trapping equipment was inspected and monitored frequently and the trap was found to be in full operational condition with no escape paths detected and no major equipment malfunctions. Efficiency releases were conducted weekly throughout the duration of the sampling season while hatchery Chinook and Coho Salmon were available. During these tests, groups of hatchery-origin juvenile salmon were collected from Wallace River Hatchery, marked and released nearly a mile upstream of the trap site. The release site was inconsistent during the 2023 season and was considered random compared to previous years. The trap was operating at an average efficiency rate of 1.24% for Chinook Salmon sub-yearlings during the 2023 sampling season (Table 4). This efficiency estimate is about average for this trapping location (2001-2022 average: 1.3%). Efficiency trials with yearling Coho Salmon indicate an efficiency of approximately 0.13%. This is well below the project efficiency average for yearling Coho Salmon at the Snoqualmie (2002-2022 average: 0.79%). A total of 15 trap efficiency tests were conducted throughout the 2023 sampling season; seven for Chinook Salmon and eight for Coho Salmon (Table 2). Efficiency tests were rejected if the efficiency was less than 0.3% for Coho Salmon or less than 0.4% for Chinook Salmon. Tests that fall below this threshold are deemed not representative of the actual trap efficiency. One exception to this rule was made for Coho and

yearling Chinook because the production model requires at least two efficiency tests in order to model production. In this case, we added the efficiency test on May 24th even though it was only 0.20%. The total number of acceptable efficiency tests were five for Chinook and two for Coho. Those conducted with only yearling Coho in the later portion of the trap season have significantly lower values (Figure 11).

Table 4. Efficiency release dates and re-capture percentages at the Snoqualmie trap site; 2023.

Species	Date	Released	Captured	Efficiency
0+ Chinook	3/7/2023	2037	38	1.87%
0+ Chinook	3/15/2023	2120	8	0.38%
0+ Chinook	3/21/2023	2069	19	0.92%
0+ Chinook	3/29/2023	1900	33	1.74%
0+ Chinook	4/4/2023	2148	64	2.98%
0+ Chinook	4/12/2023	2012	4	0.20%
0+ Chinook	4/18/2023	1914	12	0.63%
1+ Coho	4/26/2023	1975	3	0.15%
1+ Coho	5/2/2023	1886	3	0.16%
1+ Coho	5/10/2023	1965	1	0.05%
1+ Coho	5/24/2023	1985	4	0.20%
1+ Coho	5/30/2023	1133	4	0.35%
1+ Coho	6/7/2023	1948	1	0.05%
1+ Coho	6/13/2023	1020	1	0.10%
1+ Coho	6/20/2023	1973	0	0.00%
2023 Average Chinook Efficiency				1.24%
2023 Average Coho Efficiency				0.13%

red = Efficiency too low (Coho <0.3; Chinook <0.4) for production modelling.

blue = Efficiency is low but used in production modeling for Coho and Chinook 1+ because the model requires >1 efficiency test.

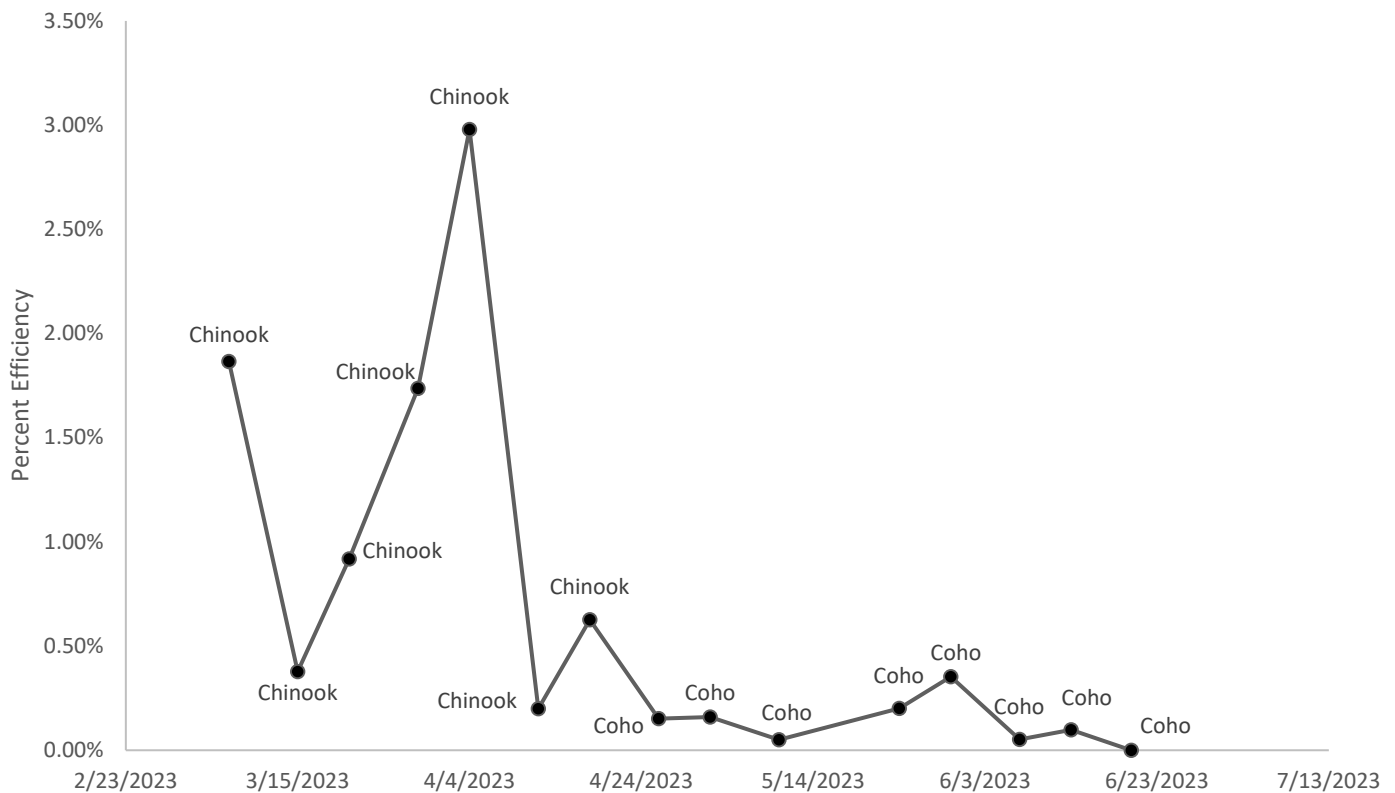


Figure 10: Time series of efficiency release dates and re-capture percentages for Chinook and Coho at the Snoqualmie trap site; 2023.

GENETIC MONITORING

Along with estimating natural production, the rotary screw trap provides an efficient way to gather genetic samples from juvenile salmonids and monitor the run timing of hatchery-origin fish. We take small fin clips from natural-origin Chinook Salmon and steelhead (*Oncorhynchus mykiss*). The steelhead samples are used to monitor the proportion of effective hatchery contribution (PEHC) in natural-origin steelhead. This research is conducted by Bethany Craig, Joseph Anderson, Ken Warheit and Todd Seamons from the Washington Department of Fish and Wildlife.

The Chinook Salmon genetic samples are used for genetic monitoring by the Tulalip Tribes’ stock assessment program. These samples are genotyped to estimate relative productivity and gene flow between hatchery and natural-origin fish and to compare genetic estimates to demographic-based estimates of the proportion of hatchery-origin fish spawning naturally ($pHOS_{G,D}$) and proportion of natural influence ($PNI_{G,D}$) estimates. Additionally, Chinook spawners from 19 spawning cohorts across the basin are genotyped to assess population structure, run timing markers, effective population size and the effective number of breeders by origin, time, and location.

DISCUSSION

In 2023, the screw trap sampled the Snoqualmie River for approximately 950 hours in total and was only halted for one week of the season. Sampling was halted due to safety issues caused by high flows during JW 20 when the river reached 9,320 CFS and debris was filling the trap. It is likely that cancelations due to flooding caused us to miss pulses of out-migrating fish, but our new production model provides more robust imputation for these unsampled periods. Aside from the aforementioned scheduling difficulties, all trapping equipment

including the trap itself, the boat, and all associated supplies were in full working order and operated as expected throughout the duration of the 2023 season with no down-time associated directly with equipment failure.

Natural-origin sub-yearling Chinook Salmon production estimates were lower than average this year. This was likely caused in part by large flooding events that occurred during egg incubation. It has been shown that flood events of large magnitude or long duration can cause redd scouring, which can lead to lower egg survival (Zimmerman et al. 2015; Montgomery et al. 1996). Chinook Salmon natural production estimates have not shown a clear trend over the last twenty years, but escapement estimates still remain far below recovery goals (Snohomish County 2019).

We estimate that natural-origin yearling Coho Salmon production was well below average in 2023 and long-term monitoring of yearling Coho Salmon out-migrations suggests that natural production is in decline. Our reported estimates appear to align well with Coho Salmon escapement estimates in the Snohomish basin, when adjusted for brood year (Pacific Fishery Management Council 2019; Snohomish County 2019).

Natural-origin yearling Chinook Salmon out-migrations have been abnormally low in recent years. This is cause for concern since diminished life-history diversity can lower the resilience of Chinook Salmon stocks. The decline in stream-type Chinook Salmon may be an indicator that freshwater juvenile rearing habitat could be improved. Recent research has shown that floodplain reconnection, barrier removal, bank armor removal, wood augmentation, estuary restoration and shade restoration could greatly improve salmonid productivity in the Snohomish Basin (Beechie et al. 2023). Improvements in juvenile salmon rearing habitat and spawning habitat would greatly contribute to the recovery of threatened salmon and steelhead populations in the Snoqualmie River.

The biggest difficulty in the 2023 trap season was the poor efficiency tests that severely impacted our ability to estimate production of outmigrants. Inconsistent efficiency releases during the 2023 season likely impacted our ability to determine the true efficiency of the smolt trap. The goal for the 2024 season is to improve our consistency in release sites and the number of fish released. While sub-yearling Chinook releases had several acceptable efficiencies, yearling Coho releases were significantly lower than previous years and resulted in high uncertainty production estimates. These poor efficiencies could be because of the size difference between sub-yearling Chinook and yearling Coho (i.e. larger fish have more success in avoiding capture). It is also important to note that the Snoqualmie River typically has lower flows later in the season which negatively impacts the screw trap's catching efficiency. High mortality during yearling Coho releases has also been a concern that could be impacting our efficiency rates. Our poor efficiencies for yearling Coho are likely influenced by all of these factors and should be considered while planning and executing the screw trap sampling program.

REFERENCES

- Anderson, J. H., P. C. Topping. 2017. Juvenile life history diversity and freshwater Productivity of Chinook Salmon in the Green River, Washington. *North American Journal of Fisheries Management* 38:180-193.
- Beechie, T. J., A. Goodman, O. Stefankiv, B. Timpane-Padgham and M. Lowe. 2023. Habitat Assessment and Restoration Planning (HARP) Model for the Snohomish and Stillaguamish River Basins. U.S. Department of Commerce, NOAA Contract Report NMFS-NWFSC_CR_2023_02.
- Bonner, S. J. 2008. Heterogeneity in capture-recapture Bayesian methods to balance realism and model complexity. PhD thesis. Simon Fraser University, Burnaby, British Columbia.
- Bonner, S. J., Schwarz, C. J. 2011. Smoothing population size estimates for time-stratified mark-recapture experiments using Bayesian p-splines. *Biometrics* 67, 1498-1507.
- Conrad, R. H. and M. T. MacKay, 2000. Use of a rotary screw trap to monitor the out-migration of Chinook salmon yearlings from the Nooksack River: 1994-1998. *Northwest Fishery Resource Bulletin*, Project Report Series No. 10., Olympia WA.
- Crewson, M. and M. Alexandersdottir. 2022. Recent productivity of Skykomish and Snoqualmie natural origin Chinook Salmon (*Oncorhynchus tshawytscha*). The Tulalip Tribes Natural Resources Department, Tulalip, WA.
- Flagg, T. A., E. F. Prentice, and L.S. Smith. 1983. Swimming stamina and survival following direct seawater entry during parr-smolt transformation of coho salmon (*Oncorhynchus Kisutch*). *Aquaculture*. 32:383-39.
- Kinsel, C., M. Zimmerman and G. Vokhardt, L. Kishimoto, and P. Topping. 2007-2008. Years 2006-2007. Two annual reports. Skagit River Wild Salmon Production Evaluation Annual Report. Washington Department of Fish and Wildlife, Olympia, WA.
- Kubo, J., Finley, K., Nelson K. 2013. 2000-2012 Skykomish and Snoqualmie Rivers Chinook and Coho Salmon Out-Migration Study. Tulalip Tribes Natural Resource Division, Tulalip WA.
- Lisi, P. 2019. Evaluation juvenile salmon production in 2018 from the Cedar River and Bear Creek. Washington Department of Fish and Wildlife, Olympia, WA.
- Lisi, P., J. Anderson, T. Zackey, M. Pouley, E. Seay, J. Keith, K. Nelson, J. Griffith, K. Konoski, C. Scofield, A. Voloshin, A. Berger, M. McHenry, M. Elofson, M. Liermann, G. Pess, P. Topping, C. Kinsel, M. Klungle, A. Lindquist, and J. Weinheimer. 2022. Synchrony of freshwater and marine survival among Chinook salmon populations in Puget Sound. Report submitted to Puget Sound Partnership, under the Puget Sound Ecosystem Monitoring Program.
- Montgomery, D. R., J. M. Buffington, N. P. Peterson, D. Schuett-Hames, and T. P. Quinn. 1996. Stream-bed scour, egg burial depths, and the influence of salmonid spawning on bed surface mobility and embryo survival. *Canadian Journal of Fisheries and Aquatic Sciences*, 53:5, 1061-1070
- Nikl, D. I. and A. P. Farrell. 1993. Reduced swimming performance and gill structural changes in juvenile salmonids exposed to 2 (thiocyanomethylthio) benzothiazole. *Aquatic Toxicology*. 27:245-264.
- Oldemeyer, B. N., T. Copeland, and B. P. Kennedy. 2018. A multiyear hierarchical Bayesian mark-recapture model incorporating data on recurring salmonid behavior to account for sparse or missing data. *National Marine Fisheries Service. Fisheries Bulletin* 116:254-265.
- Pacific Fishery Management Council. 2019. Salmon Rebuilding Plan for Snohomish River Natural Coho. 7700 NE Ambassador Place, Suite 101, Portland, Oregon 97220-1384.
- Schwarz, C.J., D. Pickard, K. Marine and S.J. Bonner. 2009. Juvenile Salmonid Outmigrant Monitoring Evaluation, Phase II. December 2009. Final Technical Memorandum for the Trinity River Restoration Program, Weaverville, CA.
- Seiler, D., L. Kishimoto, and S. Neuhauser. 1998-2004. Years 1997-2003. Six annual reports. Skagit River wild 0+ Chinook production evaluation, annual report. Washington Department of Fish and Wildlife, Olympia, WA.
- Snohomish Basin Salmon Recovery Forum. 2005. Snohomish River Basin Salmon Conservation Plan. Snohomish County Department of Public Works, Surface Water Management Division. Everett, WA.
- Snohomish County. 2019. Snohomish River Basin – Salmon Conservation Plan Status and Trends. Snohomish County Department of Public Works, Surface Water Management Division. Everett, WA.

- Topping, P. and J. Anderson. 2021, 2021b. Years 2019-2020. Two annual reports. Green River juvenile salmonid production evaluation. Washington Department of Fish and Wildlife, Olympia, WA.
- Volkhardt, G. C., S. L. Johnson, B. A. Miller, T. E. Nickelson, and D. E. Seiler. 2007. Rotary screw traps and inclined plane screen traps. Pages 235-266 in D. H. Johnson, and coeditors, editors. Salmonid field protocols handbook: techniques for assessing status and trends in salmon and trout populations. American Fisheries Society, Bethesda, Maryland.
- Voloshin, A., C. Scofield and J. Griffith. 2022. Mainstem Stillaguamish River smolt trapping project 2021 annual report. Stillaguamish Tribe of Indians, Arlington, WA.
- Zimmerman, M. S., C. Kinsel, E. Beamer, E. J. Connor and D. E. Pflug. 2015. Abundance, Survival, and Life History Strategies of Juvenile Chinook Salmon in the Skagit River, Washington. Transactions of the American Fisheries Society, 144:3, 627-641

Prepared by:
Heidi Stewart, Field Projects Coordinator
The Tulalip Tribes Natural Resources Department

APPENDIX A: SUMMARY OF 2023 SNOQUALMIE RIVER TRAP CATCH AND MORTALITIES

February

	Chinook Salmon Unmarked		Coho Salmon Unmarked		Chum Salmon	Steelhead		Cutthroat Trout	Total Salmonid Catch	Lamprey	Dace Spp.	Sculpin Spp.	Sunfish Spp.	Stickleback	
	0+	1+	0+	1+	0+	Unmarked Smolts	Marked Smolts								
Day (22.3 hours of effort)															
Catch	13	0	0	0	2	1	0	0	16	0	1	0	0	0	0
Mortalities	0	0	0	0	0	0	0	0	0	0	0	0	0	0	0
Night (57 hours of effort)															
Catch	56	0	54	4	25	1	0	0	140	13	1	0	0	0	0
Mortalities	0	0	0	0	0	0	0	0	0	0	0	0	0	0	0
Monthly Total (73.9 hours of effort)															
Catch	69	0	54	4	27	2	0	0	156	13	2	0	0	0	0
Mortalities	0	0	0	0	0	0	0	0	0	0	0	0	0	0	0

APPENDIX A: SUMMARY OF 2023 SNOQUALMIE RIVER TRAP CATCH AND MORTALITIES

March

	Chinook Salmon		Coho Salmon		Chum Salmon	Steelhead		Cutthroat Trout	Total Salmonid Catch	Lamprey	Dace Spp.	Sculpin Spp.	Sunfish Spp.	Stickleback
	Unmarked		Unmarked			Unmarked Smolts	Marked Smolts							
	0+	1+	0+	1+	0+									
Day (85.8 hours of effort)														
Catch	30	0	0	1	365	0	0	0	396	0	1	0	0	0
Mortalities	0	0	0	0	0	0	0	0	0	0	0	0	0	0
Night (190.9 hours of effort)														
Catch	95	0	5	12	756	0	0	1	869	28	5	4	2	0
Mortalities	1	0	1	0	2	0	0	0	4	0	0	0	0	0
Monthly Total (276.7 hours of effort)														
Catch	125	0	5	13	1121	0	0	1	1265	28	6	4	2	0
Mortalities	1	0	1	0	2	0	0	0	4	0	0	0	0	0

APPENDIX A: SUMMARY OF 2023 SNOQUALMIE RIVER TRAP CATCH AND MORTALITIES

April

	Chinook Salmon		Coho Salmon		Chum Salmon	Steelhead		Cutthroat Trout	Total Salmonid Catch	Lamprey	Dace Spp.	Sculpin Spp.	Sunfish Spp.	Stickleback
	Unmarked		Unmarked			Unmarked Smolts	Marked Smolts							
	0+	1+	0+	1+										
Day (78.8 hours of effort)														
Catch	63	0	59	10	620	0	0	0	752	3	0	1	0	0
Mortalities	2	0	0	0	0	0	0	0	2	0	0	0	0	0
Night (133.5 hours of effort)														
Catch	228	0	339	98	876	2	7	1	1551	39	8	0	1	0
Mortalities	2	0	0	0	0	0	0	0	2	0	0	0	0	0
Monthly Total (212.3 hours of effort)														
Catch	291	0	398	108	1496	2	7	1	2303	42	8	1	1	0
Mortalities	4	0	0	0	0	0	0	0	4	0	0	0	0	0

APPENDIX A: SUMMARY OF 2023 SNOQUALMIE RIVER TRAP CATCH AND MORTALITIES

May

	Chinook Salmon		Coho Salmon		Chum Salmon	Steelhead		Cutthroat Trout	Total Salmonid Catch	Lamprey	Dace Spp.	Sculpin Spp.	Sunfish Spp.	Stickleback
	Unmarked		Unmarked			Unmarked Smolts	Marked Smolts							
	0+	1+	0+	1+										
Day (112.5 hours of effort)														
Catch	16	0	62	18	57	1	0	0	154	2	0	0	0	0
Mortalities	0	0	0	0	0	0	0	0	0	0	0	0	0	0
Night (118.1 hours of effort)														
Catch	63	1	469	168	64	1	0	1	767	50	6	1	3	6
Mortalities	1	0	1	0	0	0	0	0	2	0	0	0	0	0
Monthly Total (230.6 hours of effort)														
Catch	79	1	531	186	121	2	0	1	921	52	6	1	3	6
Mortalities	1	0	1	0	0	0	0	0	2	0	0	0	0	0

APPENDIX A: SUMMARY OF 2023 SNOQUALMIE RIVER TRAP CATCH AND MORTALITIES

June

	Chinook Salmon		Coho Salmon		Chum Salmon	Steelhead		Cutthroat Trout	Total Salmonid Catch	Lamprey	Dace Spp.	Sculpin Spp.	Sunfish Spp.	Stickleback
	Unmarked		Unmarked			Unmarked Smolts	Marked Smolts							
	0+	1+	0+	1+										
Day (85.3 hours of effort)														
Catch	7	0	7	0	0	0	0	0	14	5	0	0	0	0
Mortalities	0	0	0	0	0	0	0	0	0	0	0	0	0	0
Night (64 hours of effort)														
Catch	42	0	72	2	0	1	0	0	117	38	1	0	1	2
Mortalities	0	0	0	0	0	0	0	0	0	0	0	0	0	0
Monthly Total (149.3 hours of effort)														
Catch	49	0	79	2	0	1	0	0	131	43	1	0	1	2
Mortalities	0	0	0	0	0	0	0	0	0	0	0	0	0	0

Totals (948.1 total hours of effort)

	Chinook Salmon		Coho Salmon		Chum Salmon	Steelhead		Cutthroat Trout	Total Salmonid Catch	Lamprey	Dace Spp.	Sculpin Spp.	Sunfish Spp.	Stickleback
	Unmarked		Unmarked			Unmarked Smolts	Marked Smolts							
	0+	1+	0+	1+										
Catch	613	1	1067	313	2765	7	7	3	4776	178	23	6	7	8
Mortalities	6	0	2	0	2	0	0	0	10	0	0	0	0	0
% Mortalities	0.98	0.00	0.19	0.00	0.07	0.00	0.00	0.00	0.21	0.00	0.00	0.00	0.00	0.00
% of Total Catch	12.26	0.02	21.35	6.26	55.32	0.14	0.14	0.06	95.56	3.56	0.46	0.12	0.14	0.16

APPENDIX A: SUMMARY OF 2023 SNOQUALMIE RIVER TRAP CATCH AND MORTALITIES